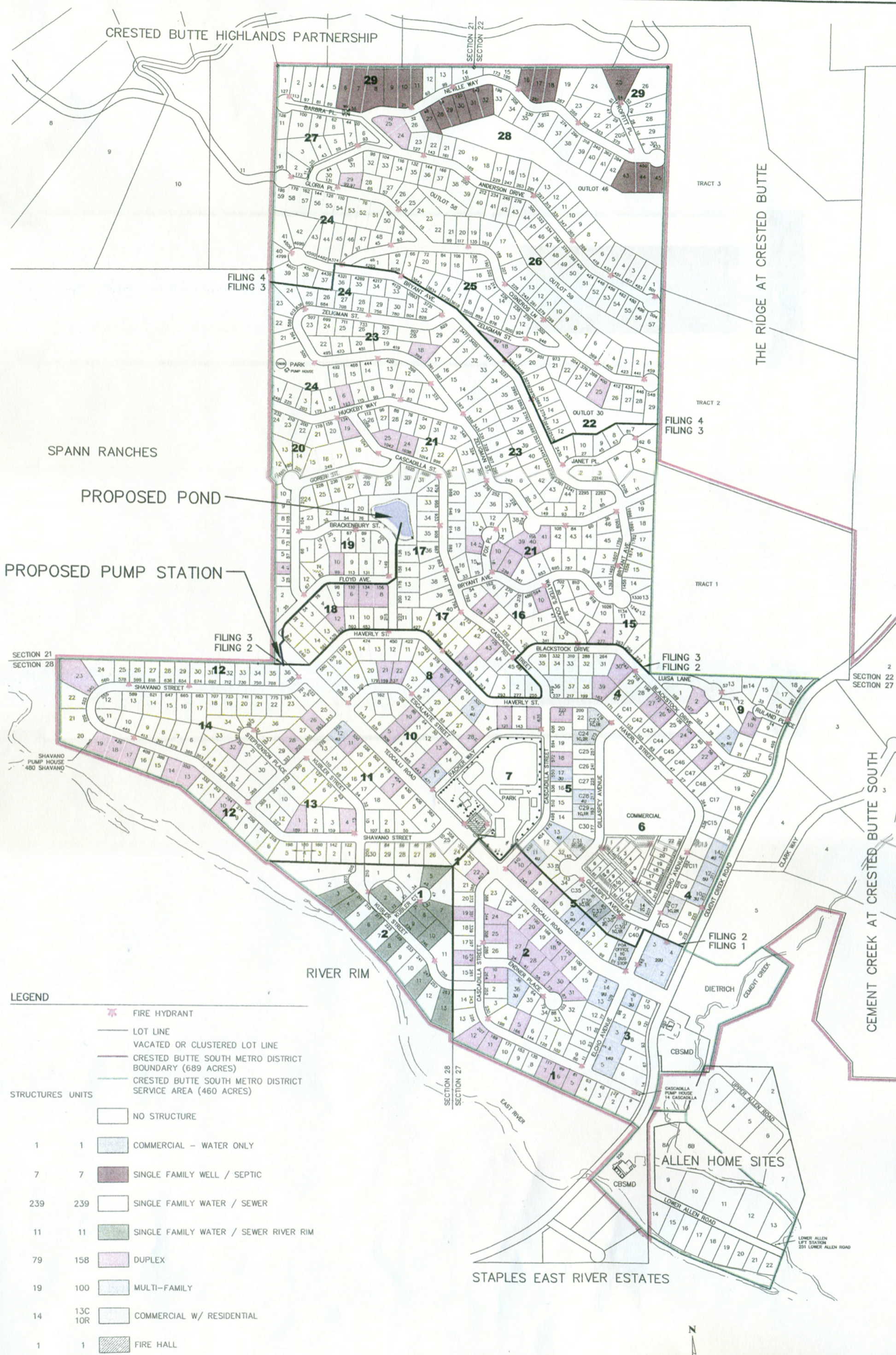


CRESTED BUTTE HIGHLANDS PARTNERSHIP



SPANN RANCHES

PROPOSED POND

PROPOSED PUMP STATION

SECTION 21  
SECTION 28

FILING 3  
FILING 2

FILING 3  
FILING 2

SECTION 22  
SECTION 27

LEGEND

- FIRE HYDRANT
- LOT LINE
- VACATED OR CLUSTERED LOT LINE
- CRESTED BUTTE SOUTH METRO DISTRICT BOUNDARY (689 ACRES)
- CRESTED BUTTE SOUTH METRO DISTRICT SERVICE AREA (460 ACRES)

STRUCTURES UNITS

- NO STRUCTURE
- 1 COMMERCIAL - WATER ONLY
- 7 SINGLE FAMILY WELL / SEPTIC
- 239 SINGLE FAMILY WATER / SEWER
- 11 SINGLE FAMILY WATER / SEWER RIVER RIM
- 79 DUPLEX
- 19 MULTI-FAMILY
- 14 COMMERCIAL W/ RESIDENTIAL
- 1 FIRE HALL

372 542

STAPLES EAST RIVER ESTATES

ALLEN HOME SITES

COPYRIGHT 2009 NCW & ASSOCIATES, INC. DATE: 1/12/11

CRESTED BUTTE SOUTH  
PORTIONS OF SECTIONS 21, 22, 27 & 28  
TOWNSHIP 14 SOUTH, RANGE 85 WEST, 6TH P.M.

BUILD-OUT STATUS  
DECEMBER 31, 2010

300 150 0 300 600

SCALE: 1" = 300'

